

PART OF THE SW.1/4, OF SECTION 18, T.6N., R.1W., S.L.B. & M.

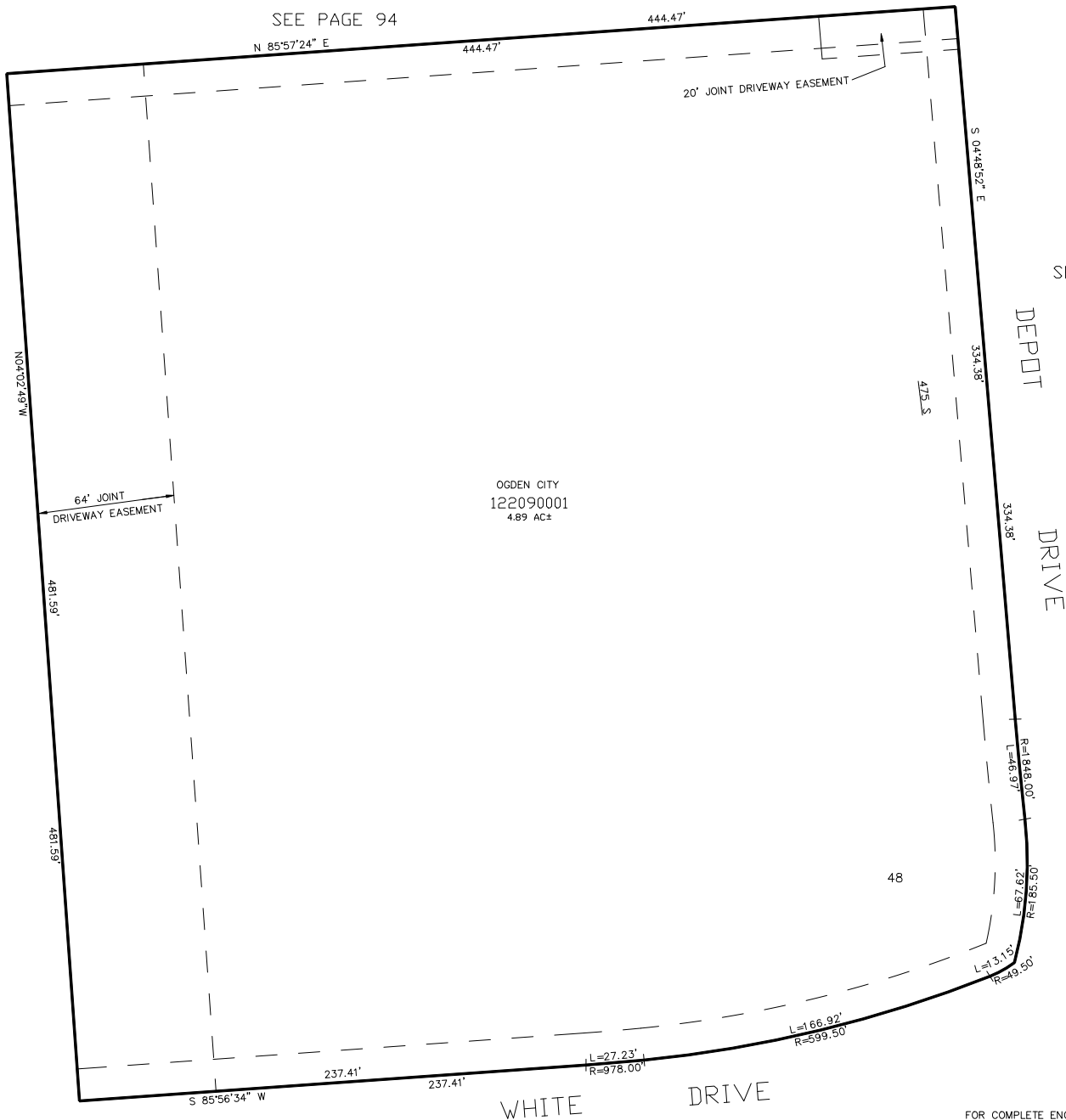
# BUSINESS DEPOT OGDEN – PLAT 16

IN OGDEN CITY

SCALE 1" = 40'

TAXING UNIT: 359

SEE PAGE 94



SEE PAGE 94

SEE PAGE 94

15' PUBLIC UTILITY EASEMENTS EACH  
SIDE OF PROPERTY LINES AS INDICATED  
BY DASHED LINES EXCEPT AS OTHERWISE  
SHOWN.

FOR COMPLETE ENG DATA SEE  
ORIGINAL DEDICATION PLAT IN  
BOOK 61, PAGE 94 OF RECORDS.

SEE PAGE 208